



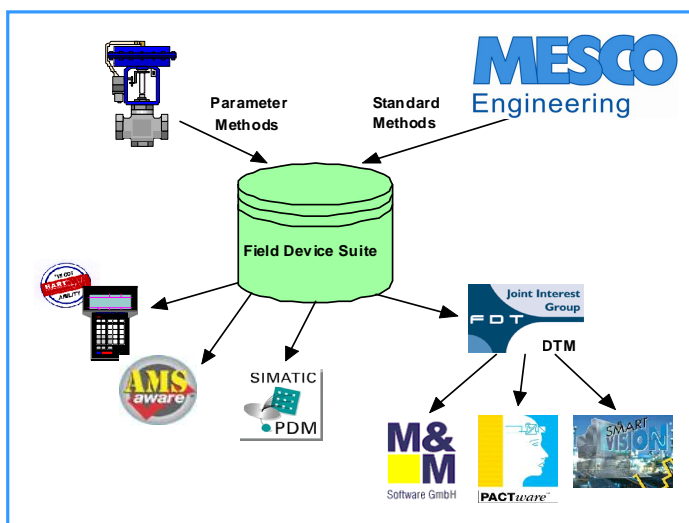
PC-Software Engineering

Overview

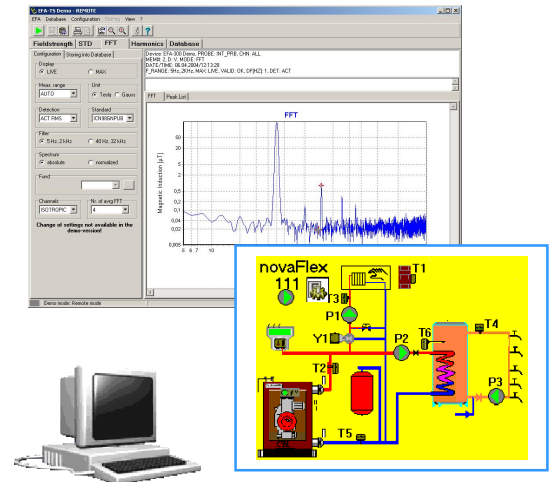
The development of custom software for industrial measurement and control is a vital part of MESCO Engineering's business services. MESCO provides best available technology to acquire, visualize and communicate data to manage assets and processes.

Key Applications

- Stand-alone applications for measurement and control
- Data acquisition, remote maintenance and service
- Communication (fieldbus and proprietary systems, inter/intranet solutions)
- Test system applications for the design of production equipment
- Database integration
- Tools for parameterization and diagnosis of field devices (EDDL, FDT)
- Visualisation, device integration for PLC systems, client/server applications



PC software and complete product development - from one source! Try us!



Key Competence

MESCO employs best available technology for PC software engineering.

- Application of V-model: all elements in the process definition are customized and oriented to V-model with definite milestones and approvals
- Tool supported analysis and design on UML basis (Rhapsody, Object F)
- Line oriented measurement of interference ability complying to national, European and international standards DIN, VDE, EN, IEC, CISPR, NAMUR
- Detailed test specification for the prototypes
- Comprehensive documentation of all development steps

Technology

- Realization in suitable programming language (C/C++, C#, Java, Visual Basic, etc.)
- COM/DCOM, XML.NET, CORBA, TCP/IP, USB, RS232, fieldbus systems
- Operating systems: Win XP, Win 2000, WinNT, Win9x, Win ME, WinCE, Linux, Embded Linux, PDA

Related Services

- Electronic and software engineering
- Product development
- Integration tests in the MESCO Fieldbus Laboratory